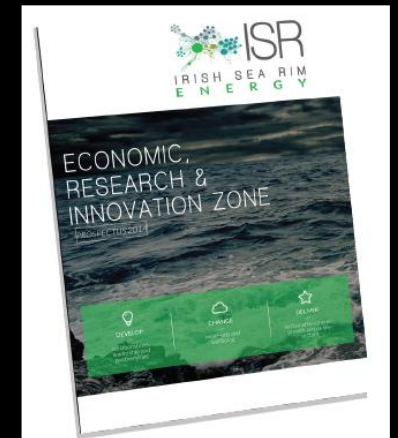
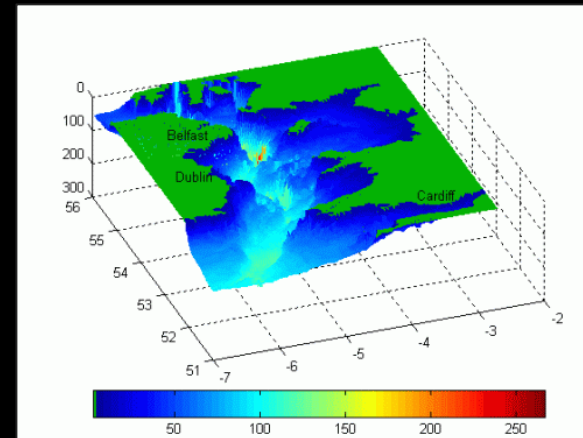


Irish Sea Rim: A new paradigm for regional economic growth and collaborative working

Economic Research & Innovation Zone



Irish Sea Rim – vision and mission

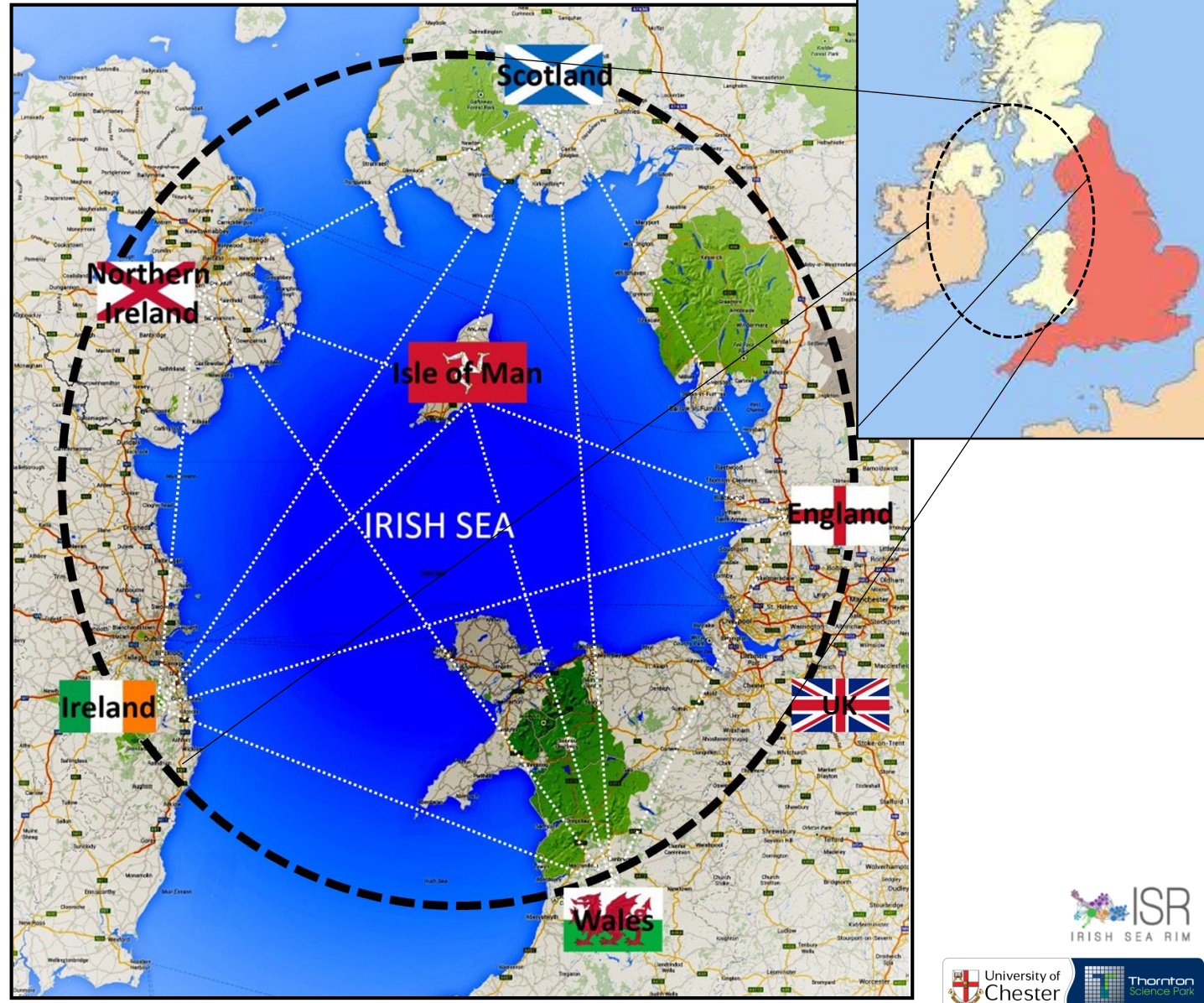
Irish Sea Rim Economic Research & Innovation Zone

Initiated to explore the potential for growth, innovation & collaboration around & across the Irish Sea, encompassing 3 nation states, 6 countries, and a wealth of public & private sector linkages

The Irish Sea Rim can drive socio-economic growth across transnational boundaries and develop regional excellence ($2 + 2 = 5$)

The Irish Sea Rim can develop as a regional economic counterbalance to London (centric) & the South East

The Irish Sea Rim operates as an umbrella organisation and portal for regional programmes, investment and projects to over 18m people



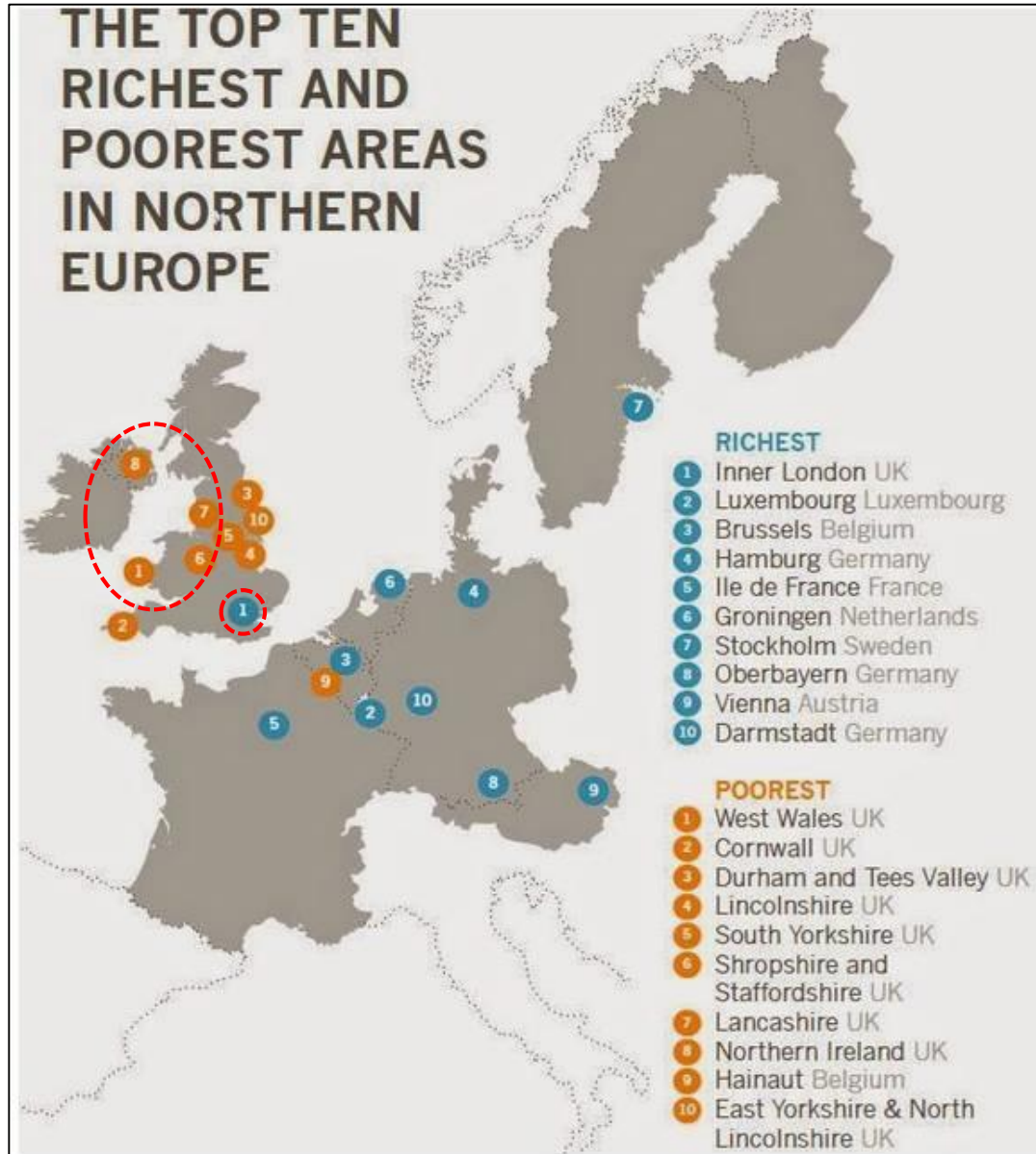
Richest & Poorest Areas in Northern Europe

Explaining the data

This data was produced by Eurostat, the data agency of the European Union. They measured **GDP per head** in regions across the EU, taking into account the different prices in different regions.

The full data is available from

http://epp.eurostat.ec.europa.eu/cache/ITY_PUBLIC/1-27022014-AP/EN/1-27022014-AP-EN.PDF



What does this mean?

In the UK we think of ourselves as having similar standard of living to other countries in Northern Europe like France, Germany, Belgium, Holland and the Nordic Countries. These are our nearest neighbours. They share a similar economic history to us, and have experienced similar political stability since the second world war. We also have close ties as members of the European Union.

However, the poorest UK regions are by far the poorest in Northern Europe. This is because the UK is much more **unequal** than other countries, where there is ***nowhere as rich as London, but nowhere as poor as our poorest regions.***



Government



Business



Academia



Community

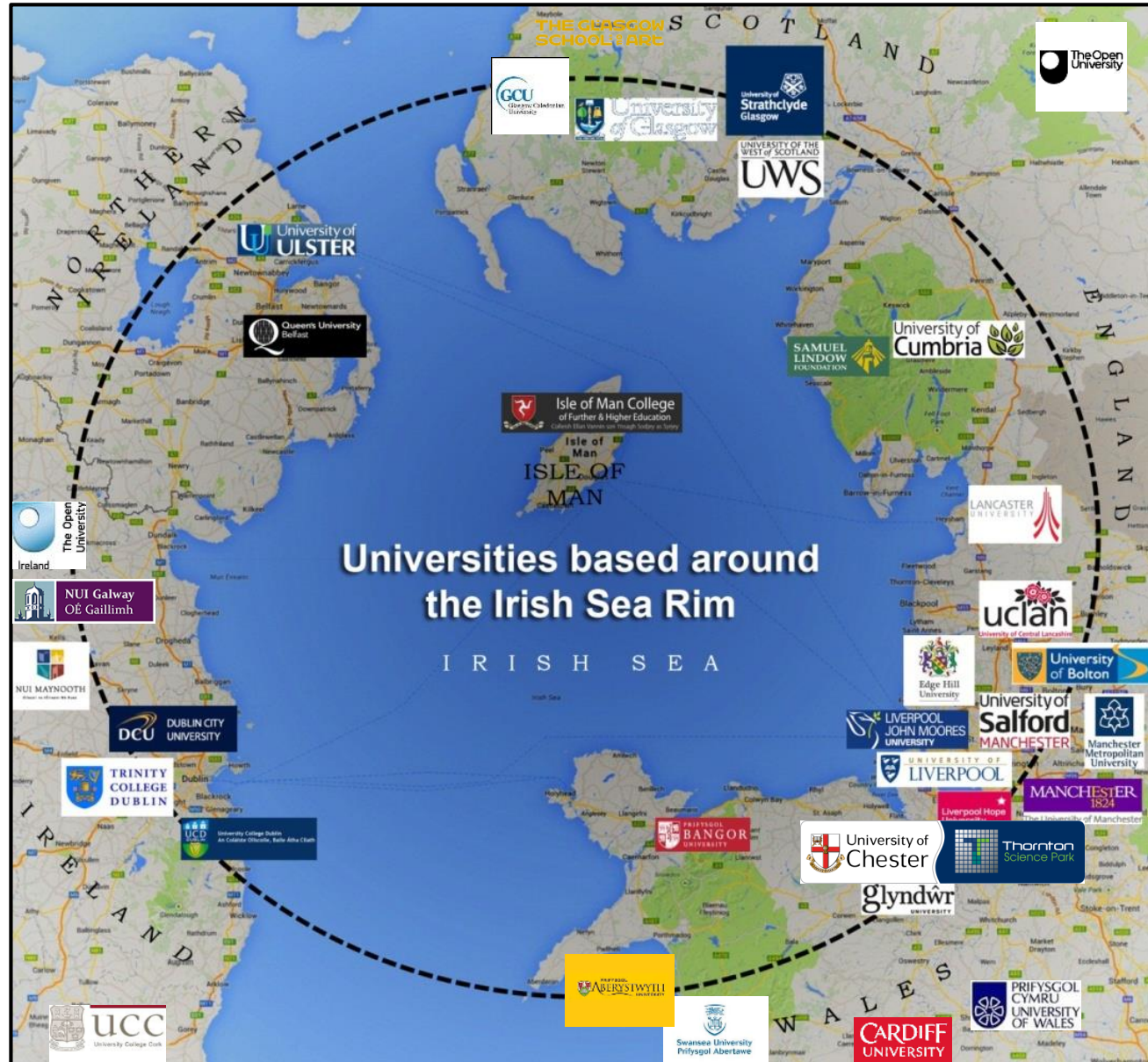
Universities around the Irish Sea Rim

30 Higher Education Providers

450,000 undergrads

170,000 postgrads

80,000 academics



Businesses around the Irish Sea Rim

>600,000 businesses

450,000 micro

100,000 small

25,000 medium

5,000 large

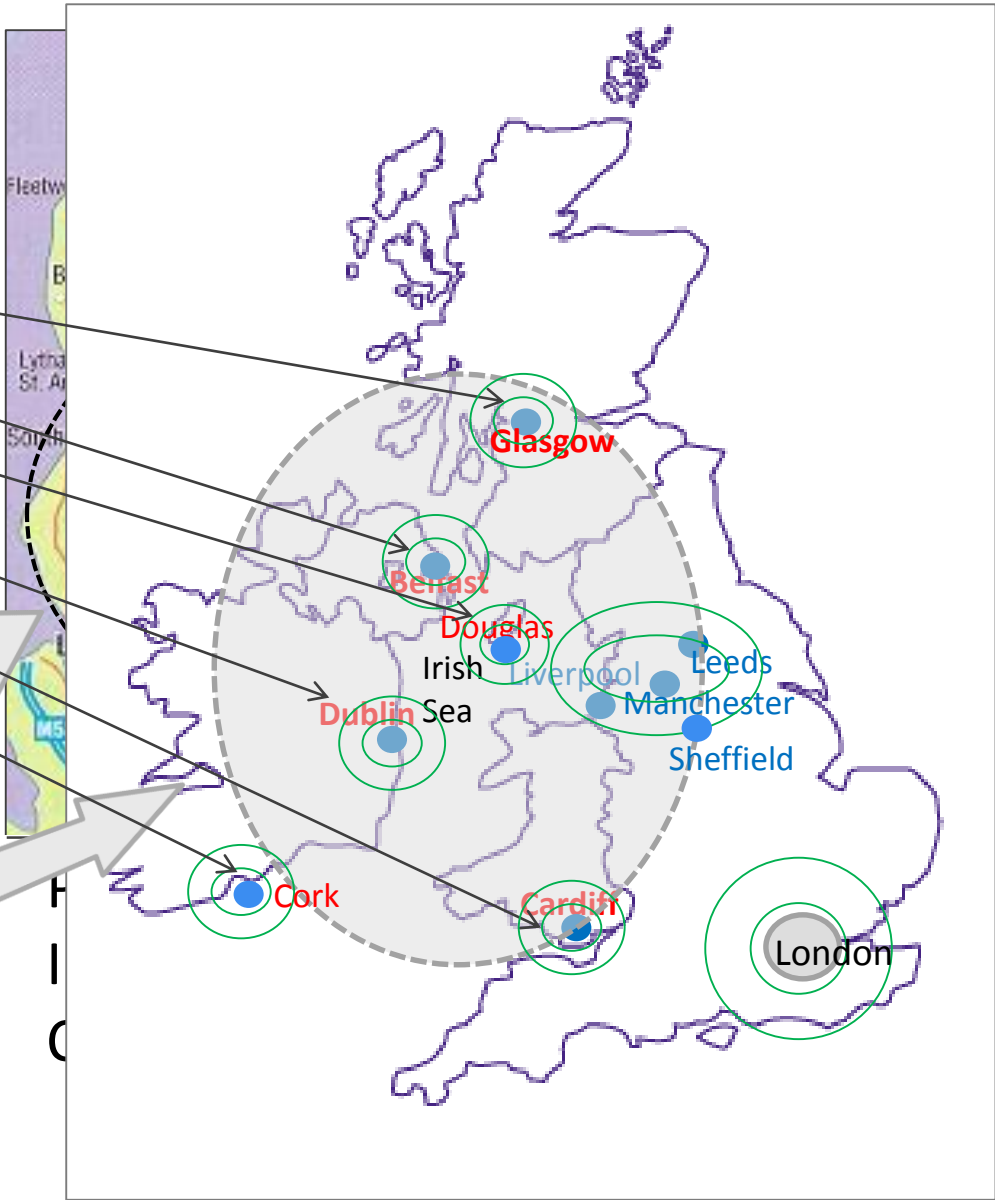


Irish Sea Rim – Liverpool Manchester Leeds Urban District

Other key ISR economic and urban centres

- Glasgow
- Belfast
- Douglas
- Dublin
- Cardiff
- Cork

Liverpool Superport
Mersey Gateway Br.
Atlantic Gateway



Net flow of people in & out of London



Reverse the flow!



Business support around the Irish Sea Rim

Wide array of business support organisations and mechanisms:

- >30 Science and Technology Parks
- >30 Chambers of Commerce
- >15 Offices for Small Business
- >6 Enterprise Agencies



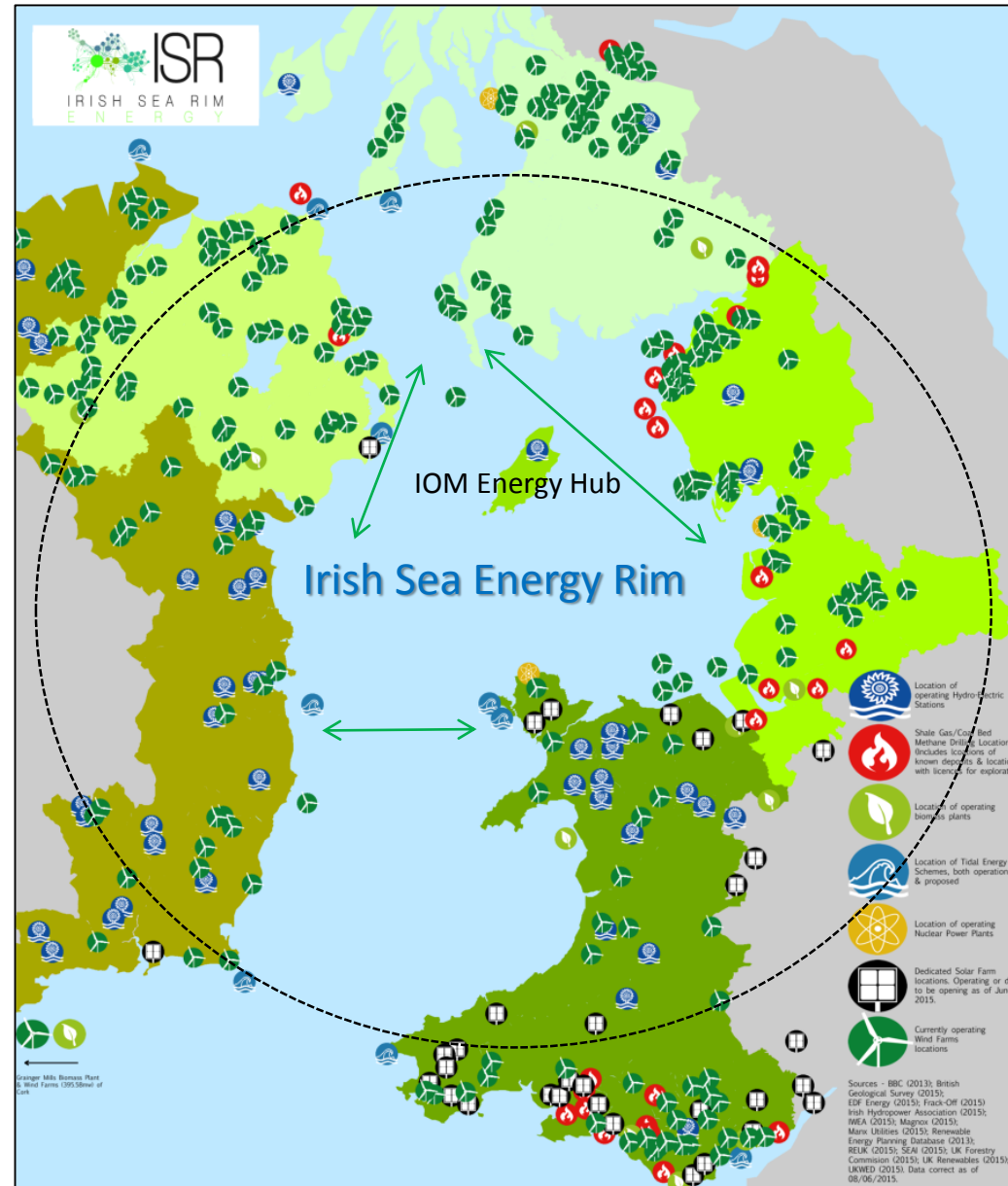
Quantifying energy resource and capability in the Irish Sea Rim

Core ISR focus: Energy

- Wind farms, (offshore & onshore)
- Solar, Biomass and Hydro
- Nuclear installations / Coal gasification
- Grid infrastructure / Smart grids / Interconnector
- Energy storage / Intermittency / Demand
- Energy efficiency / Monitoring / Security
- Extensive marine & shale gas resources
- Tidal Lagoons / Tidal Bridges / Tidal Stream
- Energy Systems Catapult / Planning
- Energy Providers (SSE, E.ON, Centrica, etc.)
- Regulatory Framework / Funding / Policy



No imported
gas until 2002
in UK



Energy generation capacity in ISR

- Current
- Planned
- Potential

Isle of Man

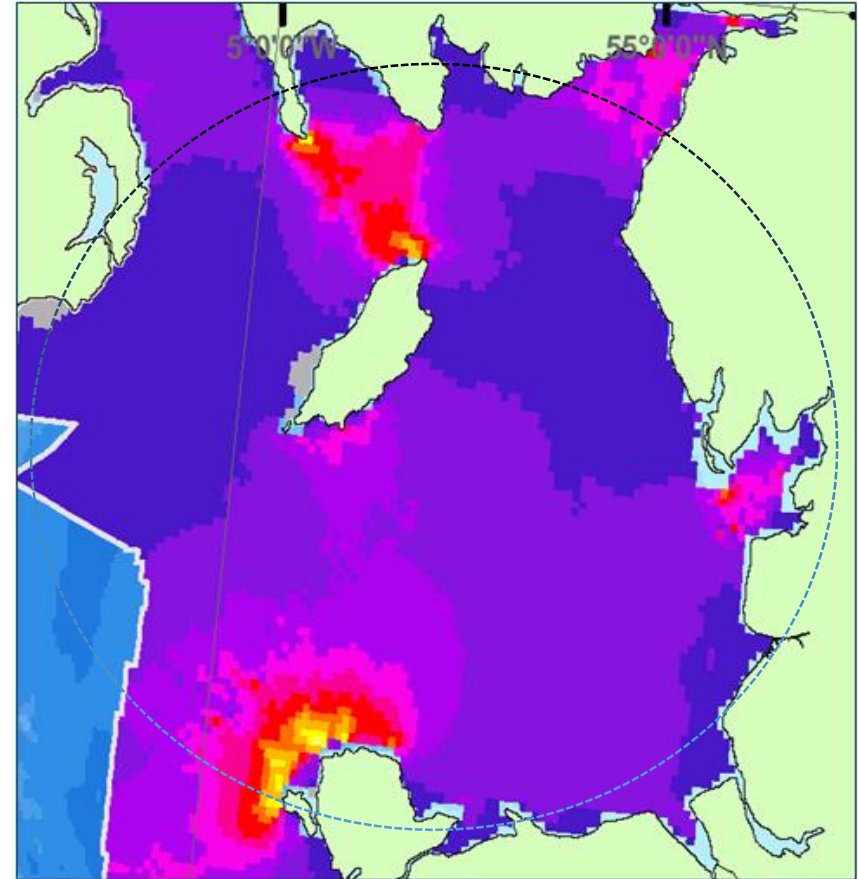
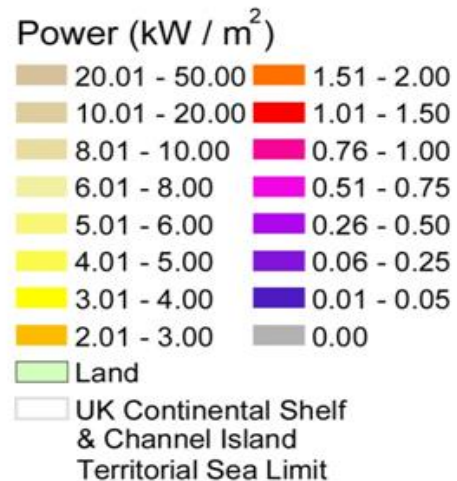
- Energy Hub for the Irish Sea Rim

Marine energy resource in the Irish Sea Rim – link to Blue Growth

Marine energy technologies

- Tidal fence
- Tidal bridge
- Tidal stream
- Tidal lagoon
- Other marine technologies

Annual Mean Tidal Power Density
Irish Sea Region of UK and Ireland



Atlas of UK Marine renewable Energy Resources

Notes

1. Model accuracy is less robust in areas closer than 1km to land.
2. Tidal model based on daily predictions throughout one year.
3. Tidal power is calculated for the upper (50%) water column.
4. Tidal power is calculated per square metre of vertical water column.
5. June 2004, Version 1.0
6. Crown copyright, All rights reserved.

Irish Sea Rim Environmental & Scientific Observatory (ISRESO)

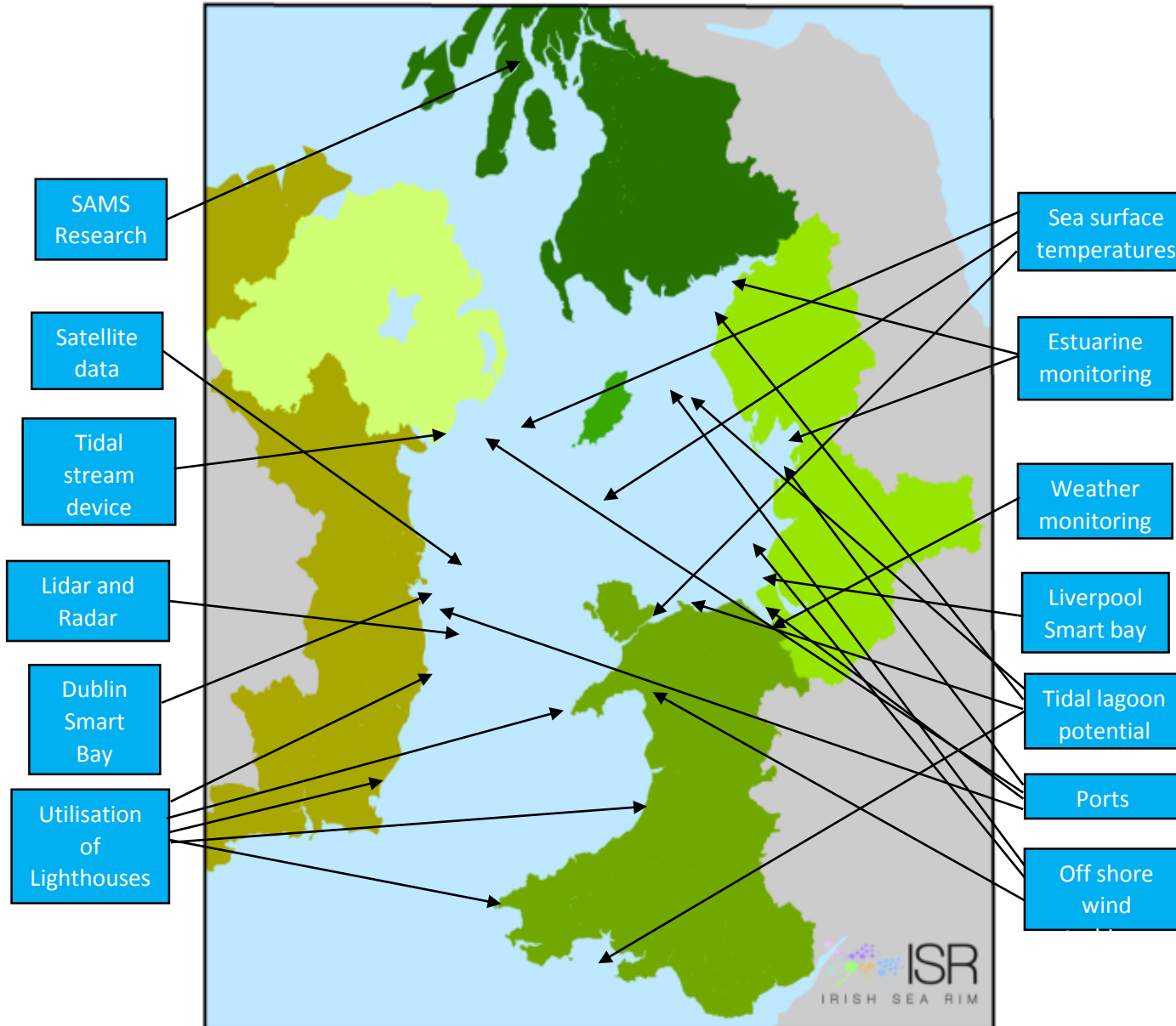
What is it?

Marine Environment Services framework

Measuring baseline services & conditions.

- Air quality
- Wind and marine energy
- Water chemistry, temp & quality
- Ecosystem

Portal for developing a single location for data access



How will it do it:

Link: Grid interconnectors, test facilities, data acquisition, SME supply chain, enterprise development, innovation, research, investment, environment, planning, operational, maintenance, decommissioning, validation, connectivity, power supply (electrical interface), floating data buoys, platforms, satellite Test bed for power systems for ships in port.

Logistics & commodity flows around the Irish Sea Rim

Wide-ranging connectivity, including major transport logistics and infrastructure:

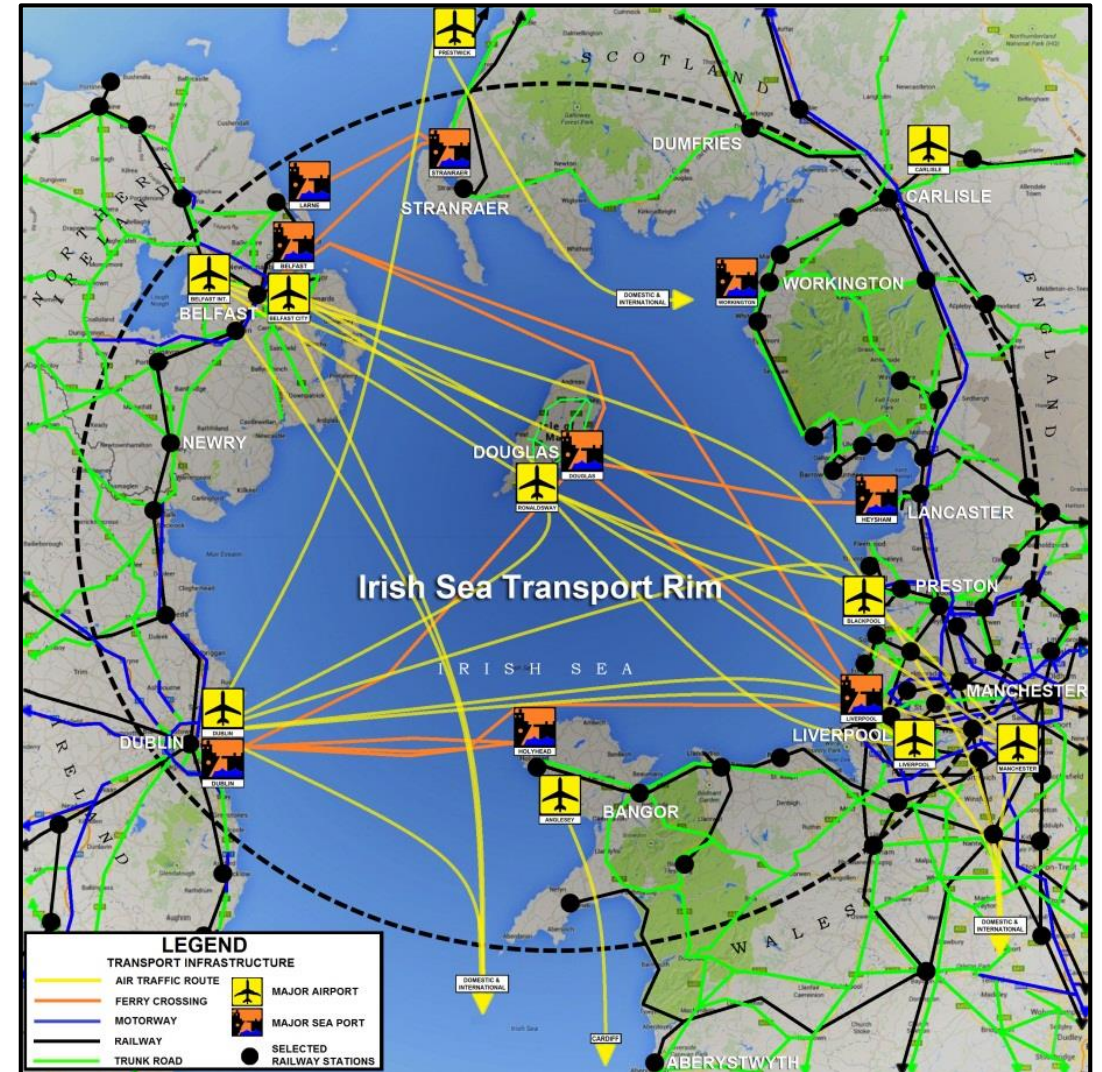
- >15 airports
- >15 seaports
- Regional and national road & rail networks
- Hubs & facilities

Key challenge to improve transport infrastructure and travel costs:

- Cost and ease of travel
- Liverpool Superport / Atlantic Gateway
- Improved infrastructure

Tourism:

- Opportunities for Cruise Tourism to grow engaged with expanding port activity
- Link to wider Atlantic Cruising
- Infrastructure improvements (ROI)

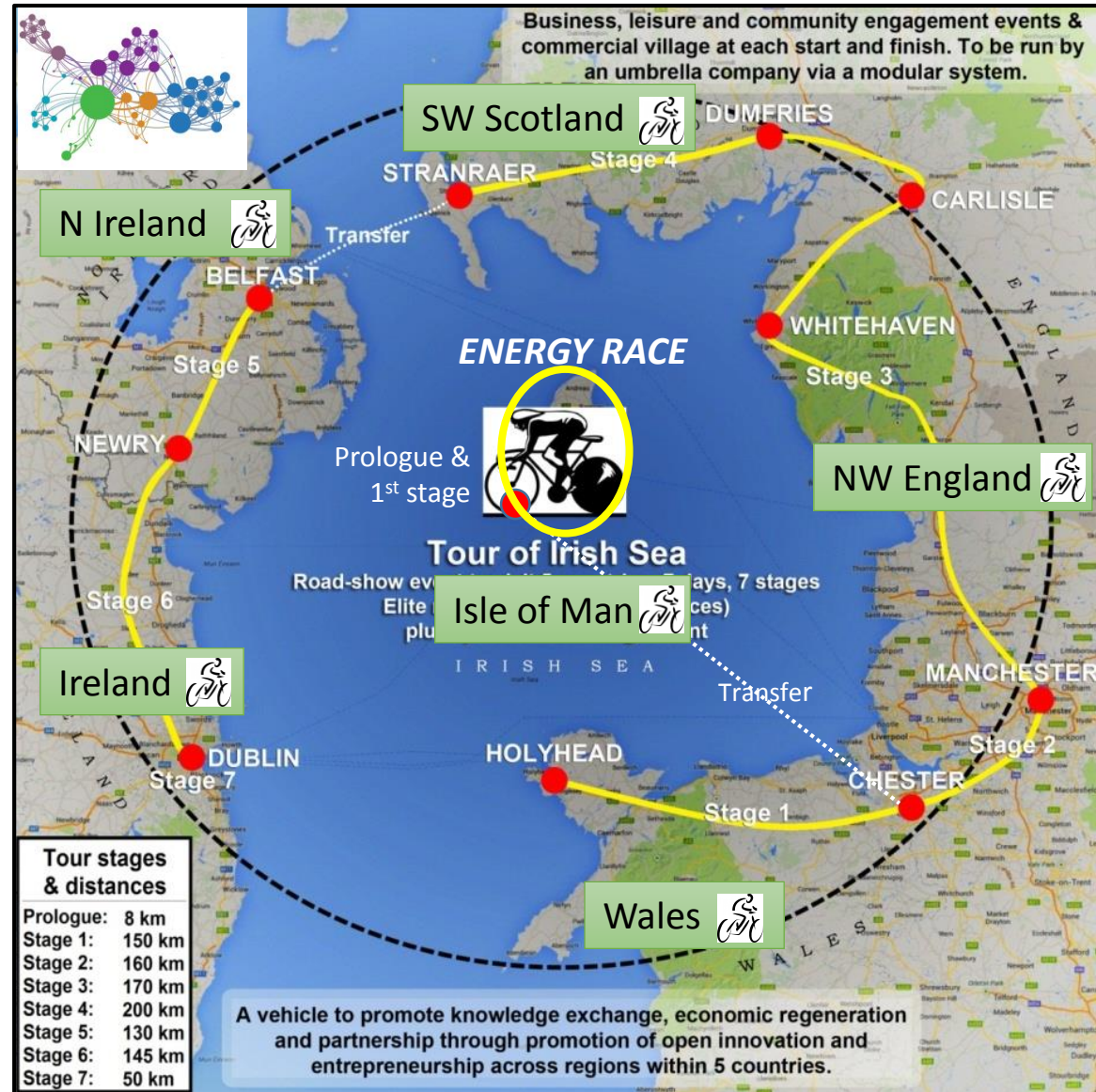


Energy Race: Tour of the Irish Sea Rim

**A holistic link to a wealth of
enterprise, public-sector bodies,
HEIs & local communities**



www.energyrace.org



ENERGY RACE

(Road-show event
to visit 6 countries)
7 days – 7 stages
Elite Men & Elite Women
(2 races) plus sportive
multi-stage event

Holistic links:

Chambers of Commerce; Local
Enterprise Partnerships;
Regional and City Councils;
Trade Associations; Integrate
SMEs; Business Breakfasts;
Innovation Challenge; BIS;
Manufacturing; Tourism
Boards; Community
Engagement; Enterprise
Ireland; Digital industries;
Arts; Universities; Doctoral
Centre; Leadership Centre;
Executive Education; Network
& Funding Events

Promotion of a region through wellbeing and sport

Energy & Blue Growth Events – Delivery and benefits include:

- Social inclusion and coastal community cohesion
- Increased tourism and visitors to the region
- Regional, national and international exposure
- Transnational co-operation / Partnership development
- Festival of business linked to Blue Growth
- Roadshow community and business events



Return on investment (ROI)



IRISH SEA RIM
UNIVERSITIES



IRISH SEA RIM
BUSINESS



IRISH SEA RIM
ENERGY



IRISH SEA RIM
TRANSPORT



IRISH SEA RIM
LEADERSHIP

The Irish Sea links three nation states and six governments

Supporting the
creation of
100,000 new
jobs 2016 to
2025

Collaborating
with over 250
projects over
next 5 years

Engaging with
a population
of over 18
million people

600,000
businesses
based around
Irish Sea Rim

Economic
growth via
increased GDP
per capita

Plans to
engage with
over £1 billion
of investments
in partnership
with others

Irish Sea Rim
Energy Race
to generate
£100m to
regional
economy

Access to 30
Universities
with 600,000
students and
80,000
academics

Networks
across
community,
business,
academia &
Government

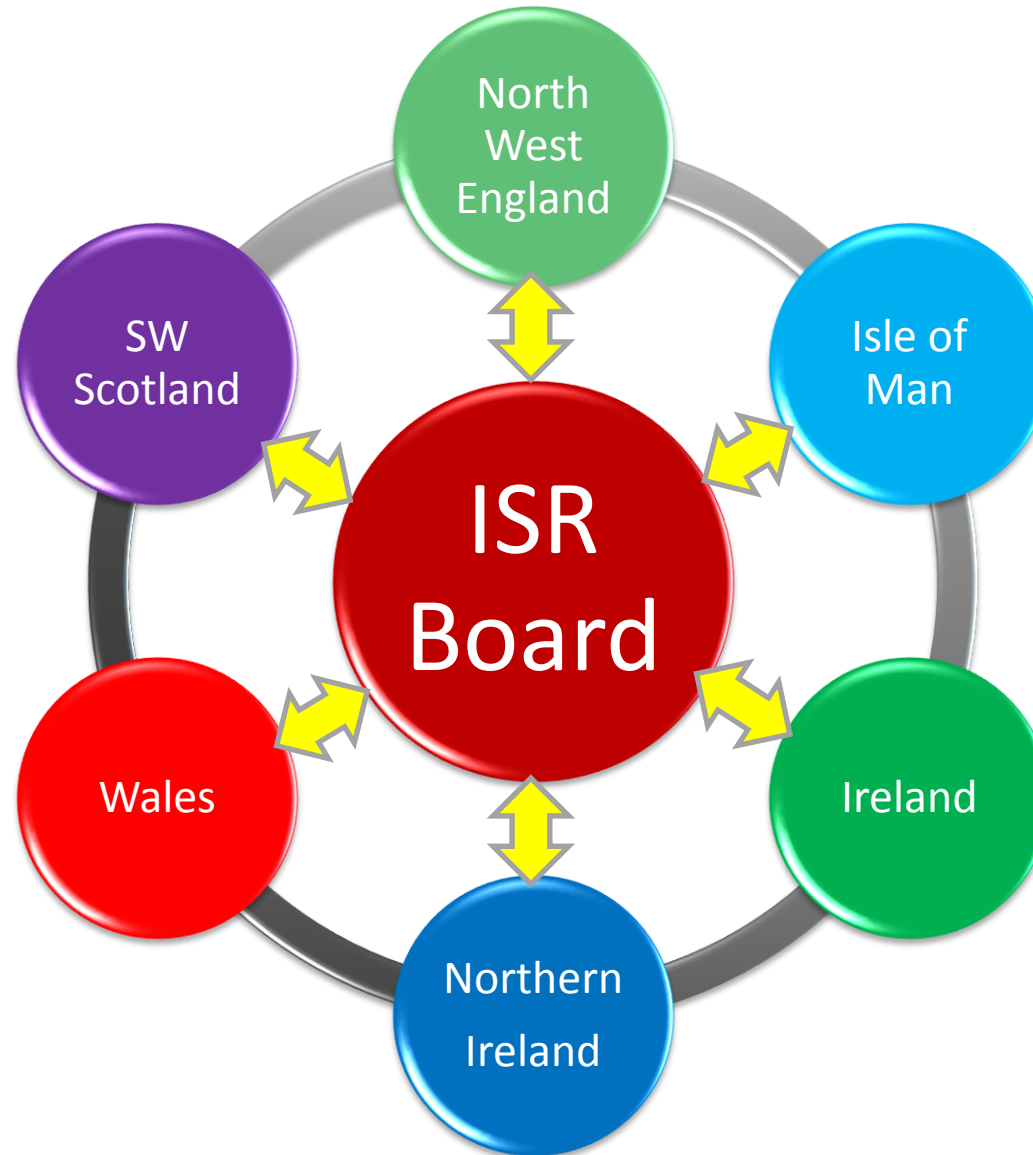
Regeneration
through
advanced
manufacturing
and higher
apprenticeships

Development of a sustainable funding model

Irish Sea Rim - governance

The central Irish Sea Rim Board sets the strategic direction

A rotating chair will operate around the Irish Sea Rim from each of the 6 member countries



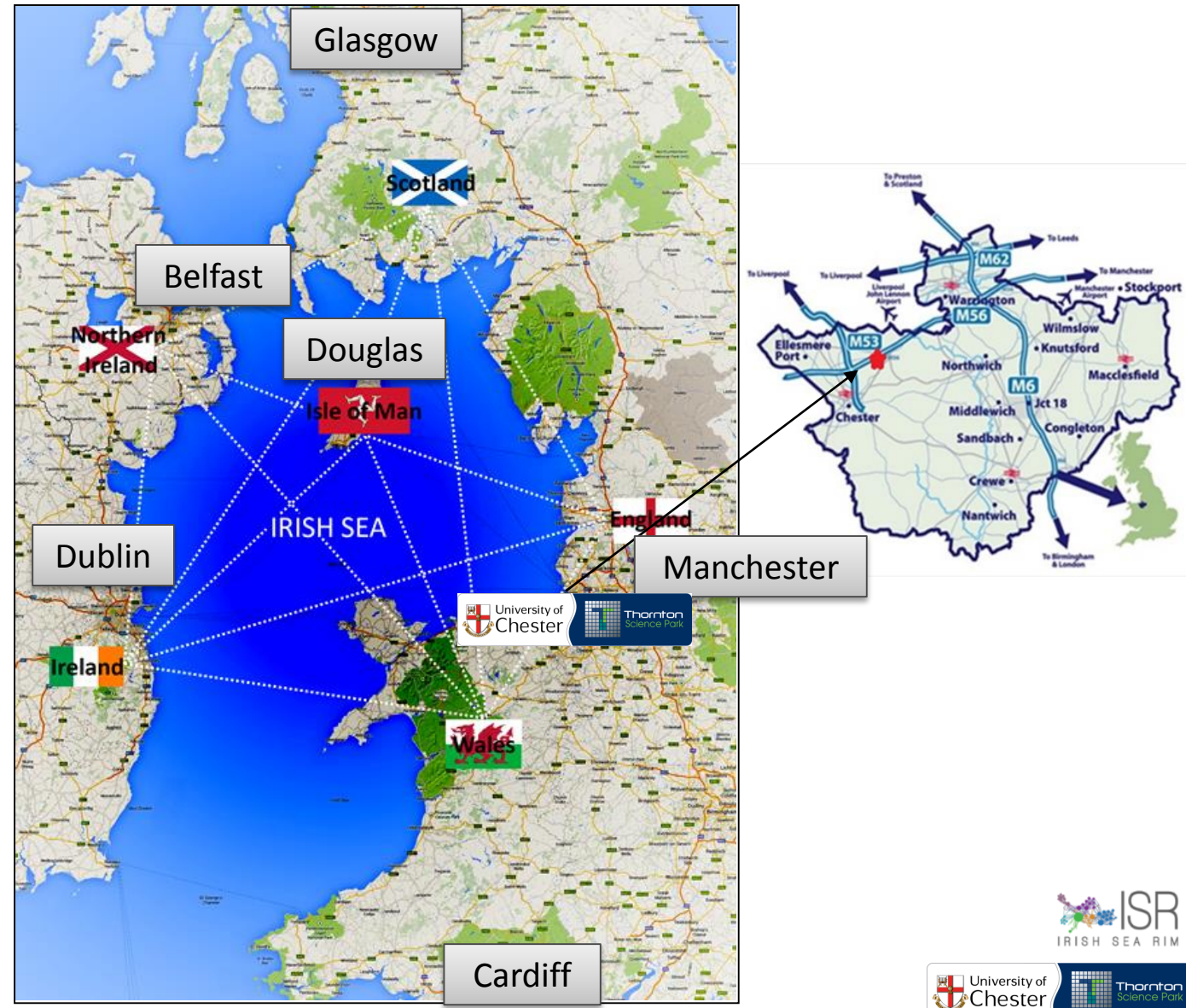
Each country has its own governance and local office

Local governance and local champions are key to ensure engagement

Annual conference rotating around the Irish Sea Rim Countries

Where are the Irish Sea Rim offices located?

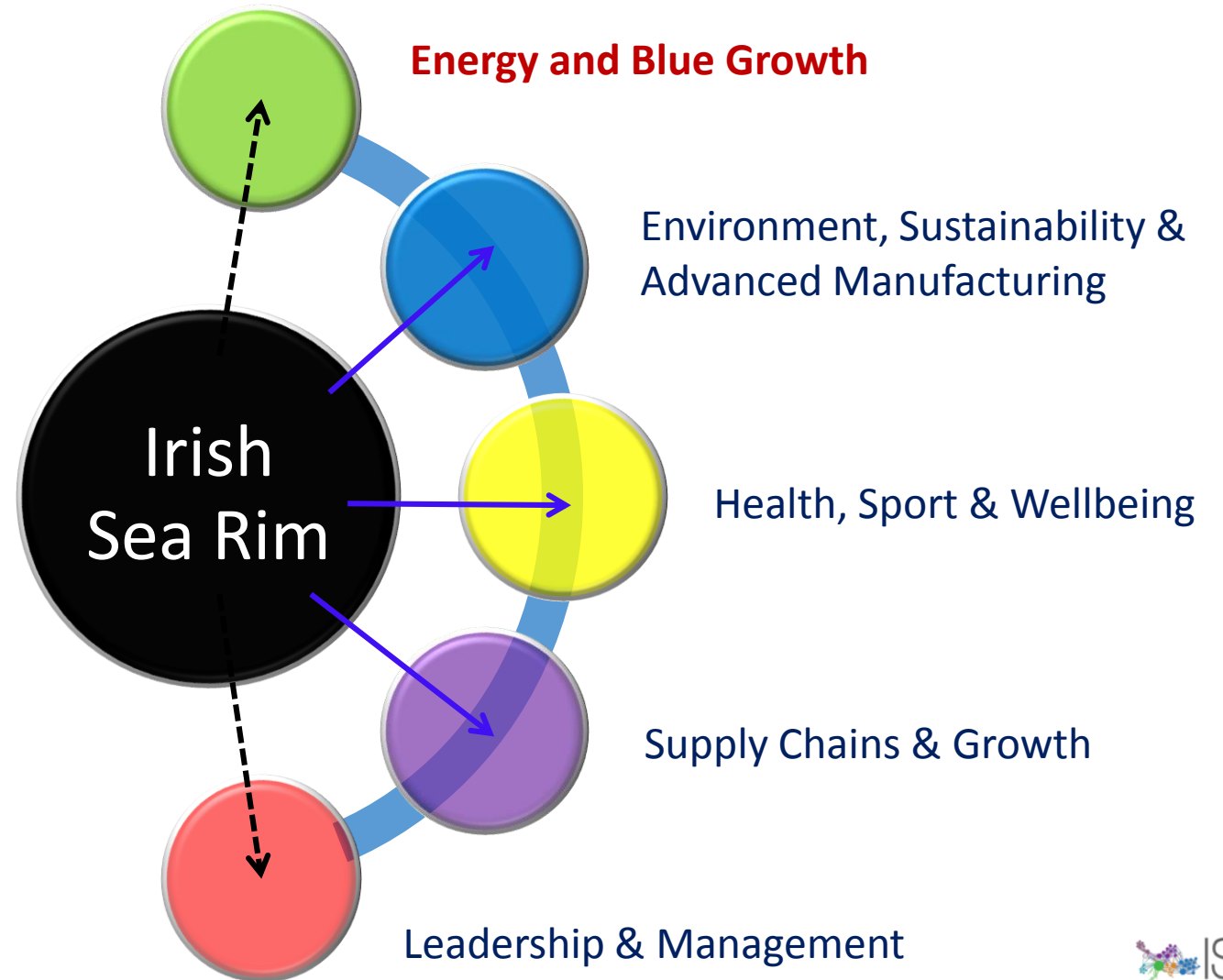
- **Country offices**
 - Glasgow
 - Belfast
 - Dublin
 - Cardiff
 - Manchester
 - Douglas
- **Regional offices**
 - These will develop across the regions as ISR grows
 - These offices will develop and lead on projects in and between the 6 countries



Irish Sea Rim – multi level projection of Irish sea concept

- **Energy and Blue Growth**

- Health & Wellbeing
- Sustainability
- Built Environment
- Connectivity & Transport
- Food & Food Security
- Logistics, Value & Supply Chain
- Skills & Employment
- Economic & Growth
- Social & Communities
- Historical, Cultural & Tourism
- Politics and policy
- Arts and Creative Industries (digital)
- Science & Technology

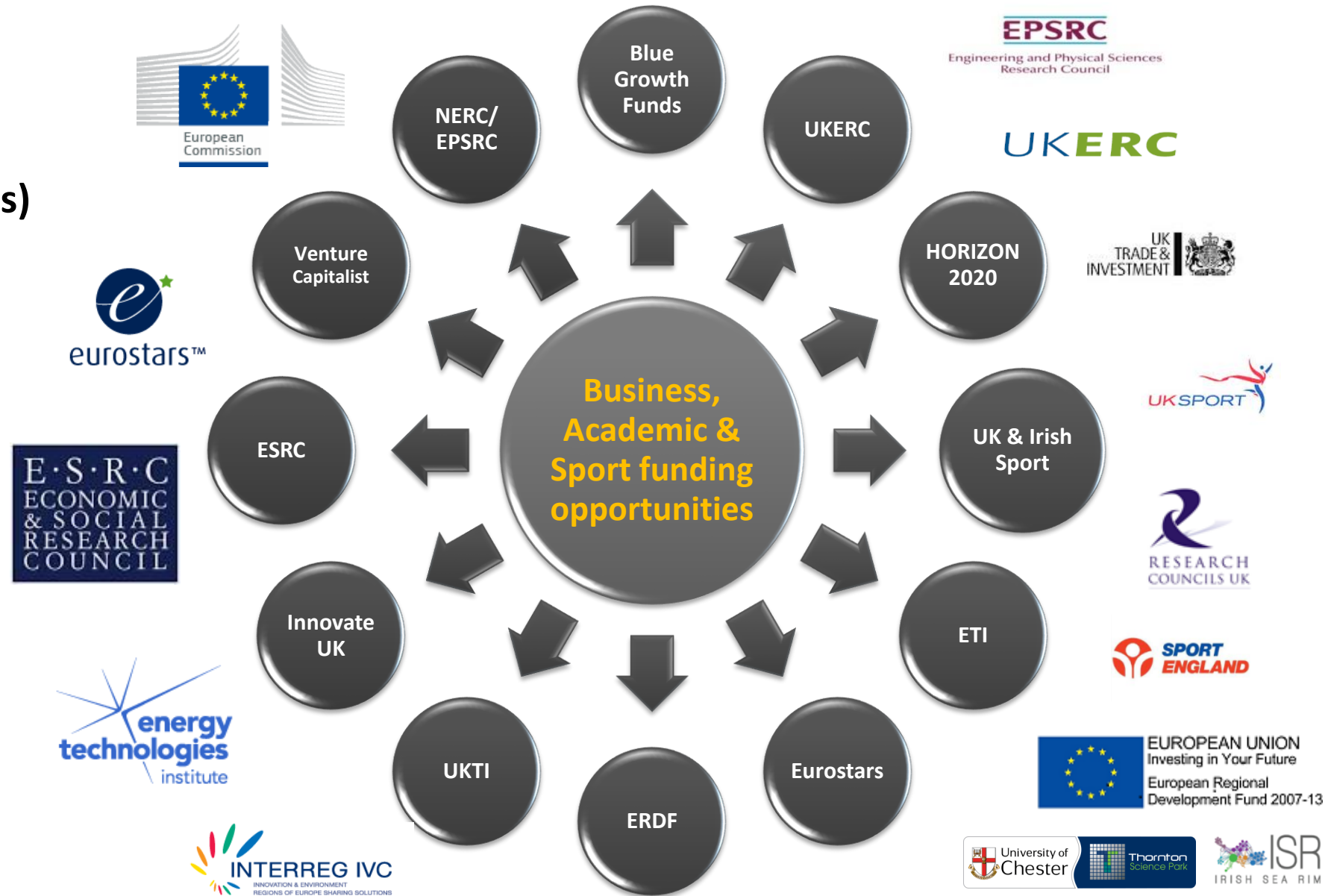


Irish Sea Rim – strategic collaborations and funding opportunities

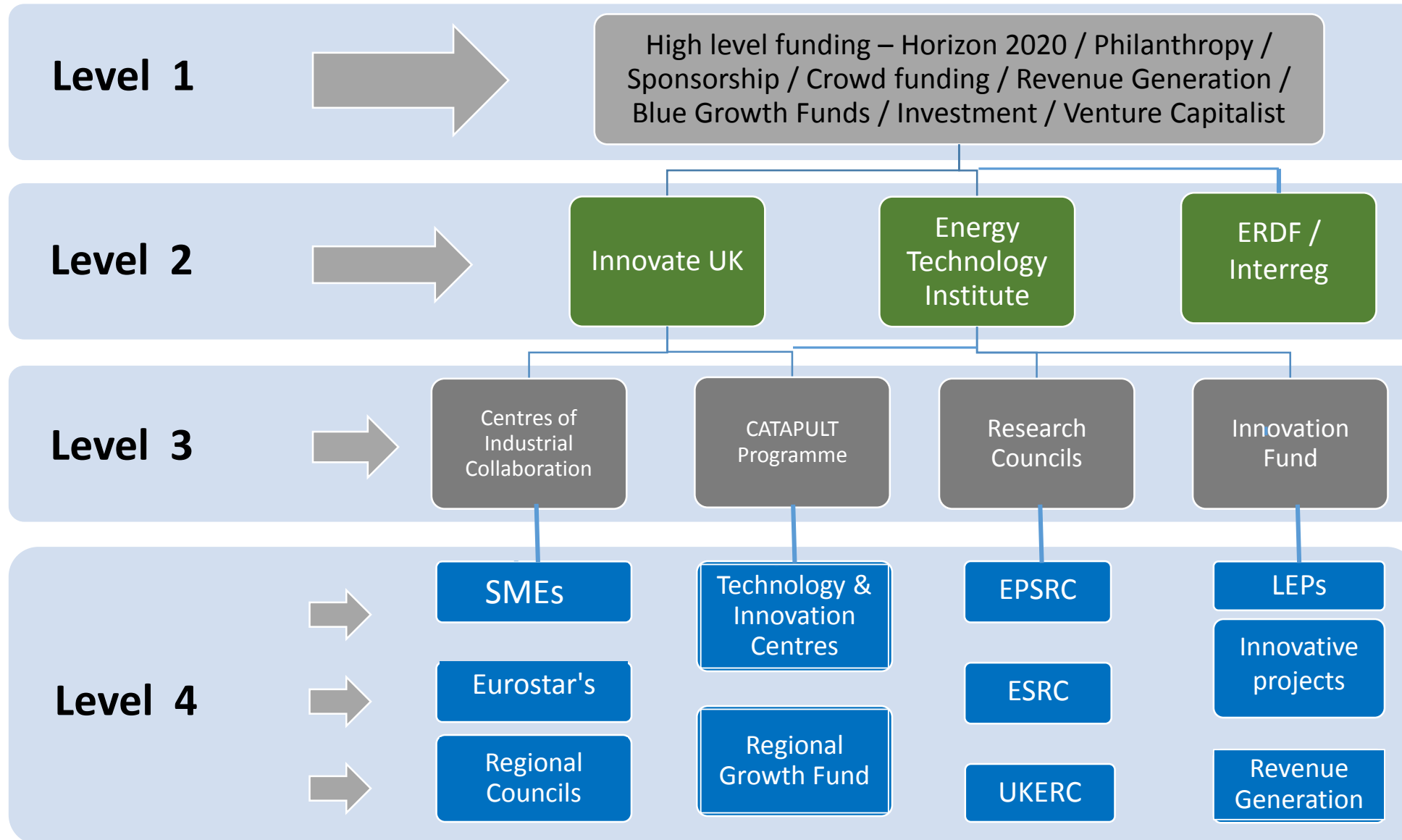
Innovate UK Driving Innovation

Links to R&D&I (opportunities)

1. Project funding
2. Sustainable models
3. Doctoral Training Centre
(Business / Leadership / Sport)
4. Research Excellence
Framework (REF) contribution
5. Skills development
6. Products into everyday use
7. Regional growth



Irish Sea Rim – multiple funding sources are important



Example of how a strategic model may operate to assist delivery and generate additional value and funding

Irish Sea Rim – example links into a local industrial landscape



Other sea regions – collaboration!

- There are many similarities and shared experiences to be explored between regions surrounded by sea
- The Irish Sea Rim is making connections with these regions
 - Atlantic Arc Region
 - Celtic Sea Region
 - Baltic Sea Region
 - Black Sea Region
 - Mediterranean Sea Region
 - North Sea Region
 - Adriatic Sea Region



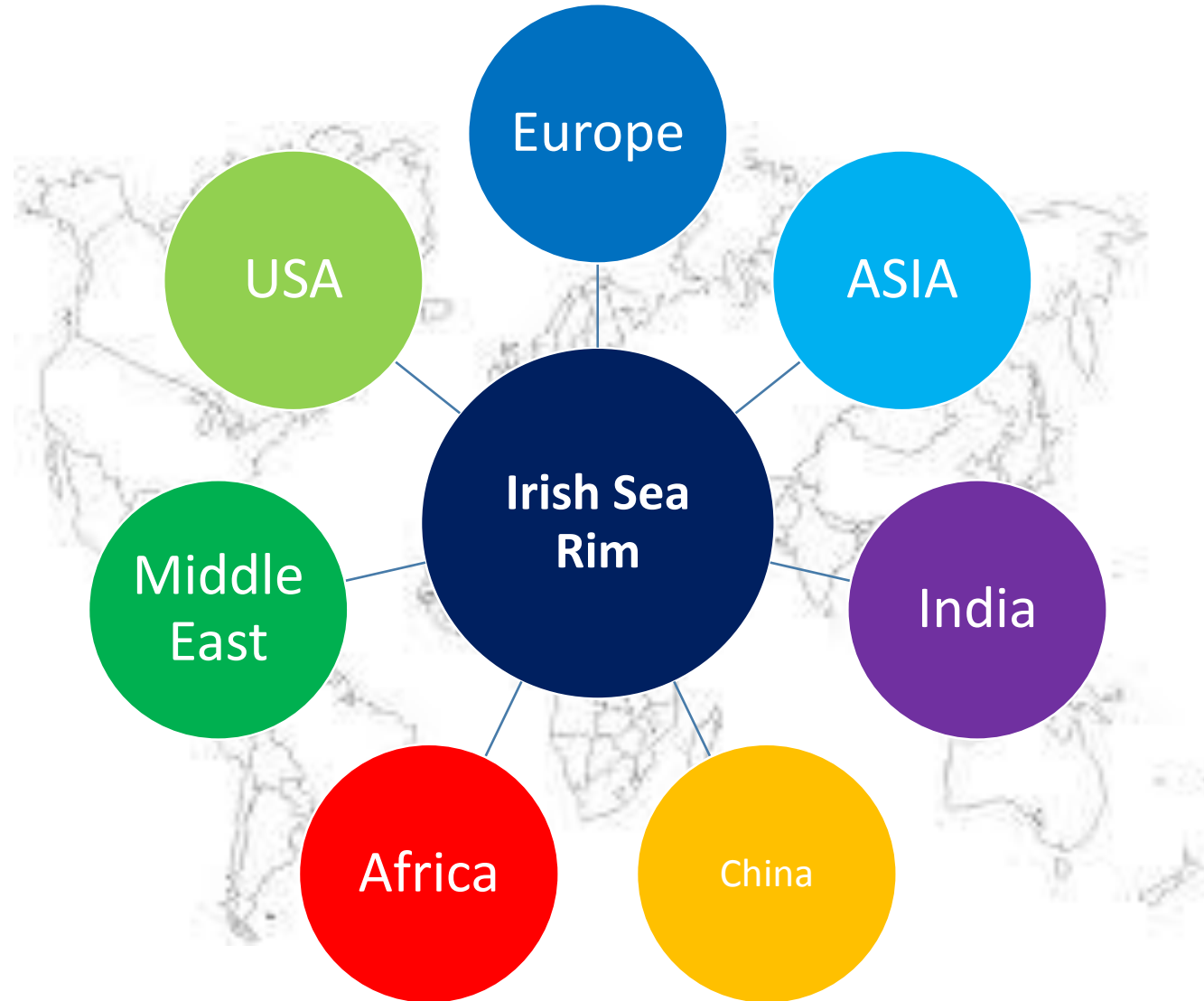
Opportunities include projects under the Interreg and Horizon 2020 funding programmes

Irish Sea Rim – international partnership development

Potential for the Irish Sea Rim to build international partnerships

Irish Sea Rim to export excellence to overseas and transnational markets

Irish Sea Rim as an economic window to the world



Irish Sea Rim to cross continents

Irish Sea Rim
Interreg & Horizon
2020 project
development

Irish Sea Rim to
collaborate with
other economic,
research and
innovation zones

Irish Sea Rim

New opportunities for a new future



The poster features the ISR logo at the top, which includes a stylized map of the Irish Sea region with various colored dots and lines. Below the logo, the text reads "IRISH SEA RIM Economic Research & Innovation zone". The main title "Launch Conference" is prominently displayed, followed by the date "May 2016" and the location "Villa Marina, Douglas, Isle Of Man". A central circular diagram is divided into four quadrants labeled "Business", "Government", "Academia", and "Community", with arrows indicating a clockwise flow between them. To the left of this diagram, a paragraph states: "The Irish Sea Rim project has been initiated to explore the potential for innovation and collaboration around the Irish Sea, encompassing 3 nation states, 6 countries and a wealth of public and private sector linkages". At the bottom, there is a row of seven circular icons representing different sectors: a green leaf, a blue sun/wave, a red flame, a black and white grid, a blue wave, a yellow atom, and a green wind turbine.

ISR
IRISH SEA RIM
Economic Research & Innovation zone

Launch Conference
May 2016
Villa Marina, Douglas, Isle Of Man

The Irish Sea Rim project has been initiated to explore the potential for innovation and collaboration around the Irish Sea, encompassing 3 nation states, 6 countries and a wealth of public and private sector linkages

Business Government
Academia Community

Leaf Sun/Wave Flame Grid Wave Atom Wind Turbine

Key themes

- Energy
- Health & Well being
- Education & Skills
- Economic Development
- Research & Innovation
- Link to existing initiatives (e.g. Northern Powerhouse)

Cross cutting themes

- Devolution
- EU Membership
- Funding
- Social & Community
- Sustainability

Collectively connecting & enriching communities.
Futures agenda. Connecting people and places.

Irish Sea Rim - summary



Irish Sea Rim – overview

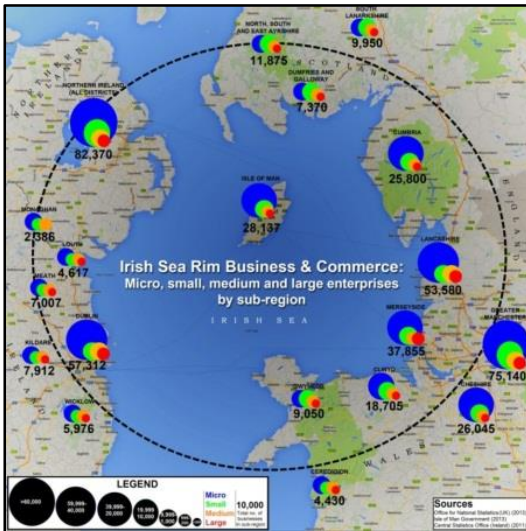
“The Irish Sea can, and perhaps should, be viewed in the same way we regard the Baltic and the Mediterranean: as maritime links that provide communication, economic wealth, cultural exchange and a strong sense of community and shared experience. ”

- Professor Philip Leigh, Irish Sea Rim Director



Irish Sea Rim – marketing





Professor Philip Leigh
Chairman and Chief Executive
Director Irish Sea Rim, Research & Innovation

p.leigh@chester.ac.uk
pleigh@irishsearim.org
+44 (0)1244 513955
+44 (0)7880257243
www.irishsearim.org
www.chester.ac.uk
www.energyrace.org



Economic Research & Innovation Zone

A new paradigm for regional growth, opportunities and collaboration